

YE3 Series Super- High Efficiency Three Phase Induction Motors

➤ General Description



- Frame sizes: 63 to 355 Rated output: 0.12 to 400kW
- Voltage: 380V Frequency: 50Hz or 60Hz
- Poles: 2, 4, 6, 8,10 Efficiency levels: IE3
- Duty Cycle: S1 Enclosure: IC411 - TEFC
- Insulation class: F Degree of protection: IP56 / IP65

Applications: Can be applied in the machines where continuous duty is required, like pumps, fans, machine etc.

Features: Beautiful profile, high efficiency and energy saving (Level 2 of GB18613-2012), class F insulation, IP55 protection grade, low noise, little vibration, reliable running.

➤ Performance Data

Model	Output kW	FLA	RPM	Eff.%	Power Factor	FLT N.m	380V		50Hz		dB(A)
							$\frac{LRT}{FLT}$ $\frac{Tst}{T_N}$	$\frac{LRA}{FLA}$ $\frac{Ist}{I_N}$	$\frac{BDT}{FLT}$ $\frac{Tmax}{T_N}$		
Synchronous speed 3000 r/min											
YE3-63M1-2	0.18	0.53	2720	63.9	0.80	0.63	2.2	5.5	2.2	61	
YE3-63M2-2	0.25	0.70	2720	67.1	0.81	0.88	2.2	5.5	2.2	61	
YE3-71M1-2	0.37	1.0	2740	69.0	0.81	1.29	2.2	6.1	2.2	62	
YE3-71M2-2	0.55	1.4	2740	72.3	0.82	1.92	2.2	6.1	2.2	62	
YE3-80M1-2	0.75	1.7	2870	80.7	0.82	2.50	2.2	7.0	2.3	62	
YE3-80M2-2	1.1	2.4	2875	82.7	0.83	3.65	2.2	7.3	2.3	62	
YE3-90S-2	1.5	3.2	2880	84.2	0.84	4.97	2.2	7.6	2.3	67	
YE3-90L-2	2.2	4.6	2880	85.9	0.85	7.30	2.2	7.6	2.3	67	
YE3-100L-2	3	6.0	2880	87.1	0.87	9.95	2.2	7.8	2.3	74	
YE3-112M-2	4	7.8	2915	88.1	0.88	13.1	2.2	8.3	2.3	77	
YE3-132S1-2	5.5	10.6	2935	89.2	0.88	17.9	2.0	8.3	2.3	79	
YE3-132S2-2	7.5	14.4	2930	90.1	0.88	24.4	2.0	7.9	2.3	79	
YE3-160M1-2	11	20.6	2950	91.2	0.89	35.6	2.0	8.1	2.3	81	
YE3-160M2-2	15	27.9	2945	91.9	0.89	48.6	2.0	8.1	2.3	81	
YE3-160L-2	18.5	34.2	2945	92.4	0.89	60.0	2.0	8.2	2.3	81	
YE3-180M-2	22	40.5	2950	92.7	0.89	71.2	2.0	8.2	2.3	83	
YE3-200L1-2	30	54.9	2965	93.3	0.89	96.6	2.0	7.6	2.3	84	
YE3-200L2-2	37	67.4	2965	93.7	0.89	119	2.0	7.6	2.3	84	
YE3-225M-2	45	80.8	2965	94.0	0.90	145	2.0	7.7	2.3	86	
YE3-250M-2	55	98.5	2975	94.3	0.90	177	2.0	7.7	2.3	89	
YE3-280S-2	75	134	2975	94.7	0.90	241	1.8	7.1	2.3	91	
YE3-280M-2	90	160	2975	95.0	0.90	289	1.8	7.1	2.3	91	
YE3-280M1-2	110	195	2975	95.2	0.90	353	1.8	7.1	2.3	91	

Performance Data

380V 50Hz

Model	Output kW	FLA	RPM	Eff. %	Power Factor	FLT N.m	$\frac{LRT}{FLT}$ $\frac{Tst}{T_N}$	$\frac{LRA}{FLA}$ $\frac{Ist}{I_N}$	$\frac{BDT}{FLT}$ $\frac{Tmax}{T_N}$	dB(A)
Synchronous speed 3000 r/min										
YE3-315S-2	110	195	2985	95.2	0.90	352	1.8	7.1	2.3	92
YE3-315M-2	132	234	2985	95.4	0.90	422	1.8	7.1	2.3	92
YE3-315L1-2	160	279	2985	95.6	0.91	512	1.8	7.2	2.3	92
YE3-315L-2	185	323	2985	95.7	0.91	592	1.8	7.2	2.3	92
YE3-315L2-2	200	349	2985	95.8	0.91	640	1.8	7.2	2.2	92
YE3-315L3-2	220	383	2985	95.8	0.91	704	1.8	7.2	2.2	92
YE3-355M1-2	220	383	2985	95.8	0.91	704	1.8	7.2	2.2	100
YE3-355M-2	250	436	2985	95.8	0.91	800	1.6	7.2	2.2	100
YE3-355L1-2	280	488	2985	95.8	0.91	896	1.6	7.2	2.2	100
YE3-355L-2	315	549	2985	95.8	0.91	1008	1.6	7.2	2.2	100
YE3-355 1-2	355	619	2985	95.8	0.91	1136	1.6	7.2	2.2	104
YE3-355 2-2	375	654	2985	95.8	0.91	1200	1.6	7.2	2.2	104
Synchronous speed 1500 r/min										
YE3-63M1-4	0.12	0.45	1310	55.8	0.72	0.87	2.1	4.4	2.2	52
YE3-63M2-4	0.18	0.64	1310	58.6	0.73	1.31	2.1	4.4	2.2	52
YE3-71M1-4	0.25	0.81	1330	63.6	0.74	1.80	2.1	5.2	2.2	55
YE3-71M2-4	0.37	1.1	1330	65.3	0.75	2.66	2.1	5.2	2.2	55
YE3-80M1-4	0.55	1.4	1430	80.6	0.75	3.67	2.3	6.5	2.3	56
YE3-80M2-4	0.75	1.8	1430	82.5	0.75	5.01	2.3	6.6	2.3	56
YE3-90S-4	1.1	2.6	1430	84.1	0.76	7.35	2.3	6.8	2.3	59
YE3-90L-4	1.5	3.5	1430	85.3	0.77	10.0	2.3	7.0	2.3	59
YE3-100L1-4	2.2	4.8	1440	86.7	0.81	14.6	2.3	7.6	2.3	64
YE3-100L2-4	3	6.3	1440	87.7	0.82	19.9	2.3	7.6	2.3	64
YE3-112M-4	4	8.4	1455	88.6	0.82	26.3	2.2	7.8	2.3	65
YE3-132S-4	5.5	11.2	1465	89.6	0.83	35.9	2.0	7.9	2.3	71
YE3-132M-4	7.5	15.0	1465	90.4	0.84	48.9	2.0	7.5	2.3	71
YE3-160M-4	11	21.5	1470	91.4	0.85	71.5	2.0	7.7	2.3	73
YE3-160L-4	15	28.8	1470	92.1	0.86	97.4	2.0	7.8	2.3	73
YE3-180M-4	18.5	35.3	1470	92.6	0.86	120	2.0	7.8	2.3	76
YE3-180L-4	22	41.8	1470	93.0	0.86	143	2.0	7.8	2.3	76
YE3-200L-4	30	56.6	1475	93.6	0.86	194	2.0	7.3	2.3	76
YE3-225S-4	37	69.6	1480	93.9	0.86	239	2.0	7.4	2.3	78
YE3-225M-4	45	84.4	1480	94.2	0.86	290	2.0	7.4	2.3	78
YE3-250M-4	55	103	1485	94.6	0.86	354	2.0	7.4	2.3	79
YE3-280S-4	75	136	1490	95.0	0.88	481	2.0	6.7	2.3	80
YE3-280M-4	90	163	1490	95.2	0.88	577	2.0	6.9	2.3	80
YE3-280M1-4	110	197	1490	95.4	0.89	705	2.0	7.0	2.2	80
YE3-315S-4	110	197	1490	95.4	0.89	705	2.0	7.0	2.2	88
YE3-315M-4	132	236	1490	95.6	0.89	846	2.0	7.0	2.2	88
YE3-315L1-4	160	285	1490	95.8	0.89	1026	2.0	7.1	2.2	88
YE3-315L-4	185	329	1490	95.9	0.89	1186	2.0	7.1	2.2	88

Performance Data

380V 50Hz

Model	Output kW	FLA	RPM	Eff. %	Power Factor	FLT N.m	$\frac{LRT}{FLT}$ $\frac{Tst}{T_N}$	$\frac{LRA}{FLA}$ $\frac{Ist}{I_N}$	$\frac{BDT}{FLT}$ $\frac{Tmax}{T_N}$	dB(A)
Synchronous speed 1500 r/min										
YE3-315L2-4	200	352	1490	96.0	0.90	1282	2.0	7.1	2.2	88
YE3-315L3-4	220	387	1490	96.0	0.90	1410	2.0	7.1	2.2	88
YE3-355M1-4	220	387	1490	96.0	0.90	1410	2.0	7.1	2.2	95
YE3-355M-4	250	440	1495	96.0	0.90	1597	2.0	7.1	2.2	95
YE3-355L1-4	280	492	1495	96.0	0.90	1789	2.0	7.1	2.2	95
YE3-355L-4	315	554	1495	96.0	0.90	2012	2.0	7.1	2.2	95
YE3-355 1-4	355	638	1495	96.0	0.88	2268	1.7	7.0	2.2	102
YE3-355 2-4	375	674	1495	96.0	0.88	2395	1.7	7.0	2.2	102
Synchronous speed 1000 r/min										
YE3-71M1-6	0.18	0.76	850	54.6	0.66	2.02	1.9	4.0	2.0	52
YE3-71M2-6	0.25	0.97	850	57.4	0.68	2.81	1.9	4.0	2.0	52
YE3-80M1-6	0.37	1.2	910	68.0	0.70	3.88	1.9	5.5	2.0	54
YE3-80M2-6	0.55	1.6	925	72.0	0.71	5.68	1.9	5.8	2.1	54
YE3-90S-6	0.75	2.0	945	78.9	0.71	7.58	2.0	6.0	2.1	57
YE3-90L-6	1.1	2.8	950	81.0	0.73	11.1	2.0	6.0	2.1	57
YE3-100L-6	1.5	3.8	950	82.5	0.73	15.1	2.0	6.5	2.1	61
YE3-112M-6	2.2	5.4	965	84.3	0.74	21.8	2.0	6.6	2.1	65
YE3-132S-6	3	7.2	975	85.6	0.74	29.4	1.9	6.8	2.1	69
YE3-132M1-6	4	9.5	975	86.8	0.74	39.2	1.9	6.8	2.1	69
YE3-132M2-6	5.5	12.7	975	88.0	0.75	53.9	1.9	7.0	2.1	69
YE3-160M-6	7.5	16.2	980	89.1	0.79	73.1	1.9	7.0	2.1	70
YE3-160L-6	11	23.1	980	90.3	0.80	107	1.9	7.2	2.1	70
YE3-180L-6	15	30.9	980	91.2	0.81	146	1.9	7.3	2.1	73
YE3-200L1-6	18.5	37.8	985	91.7	0.81	179	1.9	7.3	2.1	73
YE3-200L2-6	22	44.8	985	92.2	0.81	213	1.9	7.4	2.1	73
YE3-225M-6	30	59.1	985	92.9	0.83	291	1.9	6.9	2.1	74
YE3-250M-6	37	71.7	985	93.3	0.84	359	1.9	7.1	2.1	76
YE3-280S-6	45	85.8	990	93.7	0.85	434	1.9	7.3	2.0	78
YE3-280M-6	55	103	990	94.1	0.86	531	1.9	7.3	2.0	78
YE3-280M1-6	75	143	990	94.6	0.84	723	1.9	6.6	2.0	78
YE3-315S-6	75	143	990	94.6	0.84	723	1.9	6.6	2.0	83
YE3-315M-6	90	170	990	94.9	0.85	868	1.9	6.7	2.0	83
YE3-315L1-6	110	207	990	95.1	0.85	1061	1.9	6.7	2.0	83
YE3-315L2-6	132	244	990	95.4	0.86	1273	1.9	6.8	2.0	83
YE3-315L3-6	160	296	990	95.6	0.86	1543	1.9	6.8	2.0	83
YE3-355M1-6	160	296	995	95.6	0.86	1536	1.9	6.8	2.0	85
YE3-355M-6	185	342	995	95.7	0.86	1776	1.9	6.8	2.0	85
YE3-355M2-6	200	365	995	95.8	0.87	1920	1.9	6.8	2.0	85
YE3-355L1-6	220	401	995	95.8	0.87	2112	1.9	6.8	2.0	85

Performance Data

380V 50Hz

Model	Output kW	FLA	RPM	Eff.%	Power Factor	FLT N.m	$\frac{LRT}{FLT} \frac{Tst}{T_N}$	$\frac{LRA}{FLA} \frac{Ist}{I_N}$	$\frac{BDT}{FLT} \frac{Tmax}{T_N}$	dB(A)
Synchronous speed 1000 r/min										
YE3-355L-6	250	456	995	95.8	0.87	2399	1.9	6.8	2.0	85
YE3-355 1-6	280	510	995	95.8	0.87	2687	1.9	6.8	2.0	91
YE3-355 2-6	315	581	995	95.8	0.86	3023	1.9	6.8	2.0	91
Synchronous speed 750 r/min										
YE3-80M1-8	0.18	0.8	700	56.0	0.61	2.46	1.8	3.3	1.9	52
YE3-80M2-8	0.25	1.1	700	59.0	0.61	3.41	1.8	3.3	1.9	52
YE3-90S-8	0.37	1.4	695	66.0	0.61	5.08	1.8	4.0	1.9	56
YE3-90L-8	0.55	2.0	695	70.0	0.61	7.56	1.8	4.0	2.0	56
YE3-100L1-8	0.75	2.3	705	73.5	0.67	10.2	1.8	4.0	2.0	59
YE3-100L2-8	1.1	3.2	705	76.5	0.69	14.9	1.8	5.0	2.0	59
YE3-112M-8	1.5	4.2	715	77.5	0.70	20.0	1.8	5.0	2.0	61
YE3-132S-8	2.2	5.9	730	80.0	0.71	28.8	1.8	6.0	2.2	64
YE3-132M-8	3	7.6	730	82.5	0.73	39.2	1.8	6.0	2.2	64
YE3-160M1-8	4	9.8	725	85.0	0.73	52.7	1.9	6.0	2.2	68
YE3-160M2-8	5.5	13.1	725	86.0	0.74	72.4	1.9	6.0	2.2	68
YE3-160L-8	7.5	17.4	730	87.5	0.75	98.1	1.9	6.0	2.2	68
YE3-180L-8	11	25.0	725	89.0	0.75	145	1.9	6.5	2.2	70
YE3-200L-8	15	33.2	730	90.4	0.76	196	2.0	6.6	2.2	73
YE3-225S-8	18.5	40.6	735	91.2	0.76	240	2.0	6.6	2.2	73
YE3-225M-8	22	46.8	735	91.5	0.78	286	2.0	6.6	2.2	73
YE3-250M-8	30	62.6	735	92.2	0.79	390	1.9	6.5	2.0	75
YE3-280S-8	37	76.5	740	93.0	0.79	478	1.8	6.6	2.0	76
YE3-280M-8	45	92.6	740	93.5	0.79	581	1.8	6.6	2.0	76
YE3-280M1-8	55	110	740	93.8	0.81	710	1.8	6.6	2.0	76
YE3-315S-8	55	110	740	93.8	0.81	710	1.8	6.6	2.0	82
YE3-315M-8	75	150	740	94.0	0.81	968	1.8	6.2	2.0	82
YE3-315L1-8	90	176	740	94.5	0.82	1161	1.8	6.4	2.0	82
YE3-315L2-8	110	215	740	94.8	0.82	1420	1.8	6.4	2.0	82
YE3-355M1-8	132	257	745	95.0	0.82	1692	1.8	6.4	2.0	90
YE3-355M2-8	160	312	745	95.0	0.82	2051	1.8	6.4	2.0	90
YE3-355L1-8	185	360	745	95.2	0.82	2371	1.8	6.4	2.0	90
YE3-355L-8	200	385	745	95.2	0.83	2564	1.8	6.4	2.0	90
YE3-355 1-8	220	423	745	95.2	0.83	2820	1.8	6.4	2.0	90
YE3-355 2-8	250	481	745	95.2	0.83	3205	1.8	6.5	2.0	90
Synchronous speed 600 r/min										
YE3-315S-10	45	99	590	92.0	0.75	728	1.5	6.2	2.0	90
YE3-315M-10	55	120	590	92.5	0.75	890	1.5	6.2	2.0	90
YE3-315L1-10	75	161	590	93.0	0.76	1214	1.5	5.8	2.0	90
YE3-315L2-10	90	190	590	93.4	0.77	1457	1.5	5.9	2.0	90

Performance Data

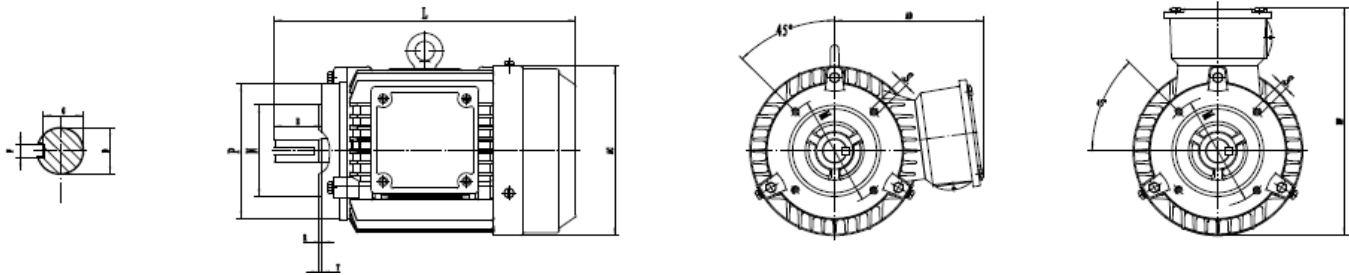
380V 50Hz

Model	Output kW	FLA	RPM	Eff. %	Power Factor	FLT N.m	$\frac{LRT}{FLT} \frac{Tst}{T_N}$	$\frac{LRA}{FLA} \frac{Ist}{I_N}$	$\frac{BDT}{FLT} \frac{Tmax}{T_N}$	dB(A)
Synchronous speed 600 r/min										
YE3-355M1-10	110	228	595	93.8	0.78	1766	1.3	6.0	2.0	90
YE3-355M2-10	132	273	595	94.2	0.78	2119	1.3	6.0	2.0	90
YE3-355L1-10	160	331	595	94.2	0.78	2568	1.3	6.0	2.0	90
YE3-355L-10	185	383	595	94.2	0.78	2969	1.3	6.0	2.0	90
YE3-355 1-10	200	414	595	94.2	0.78	3210	1.3	6.0	2.0	90
YE3-355 2-10	220	455	595	94.2	0.78	3531	1.3	6.0	2.0	90

Dimensions & Mounting

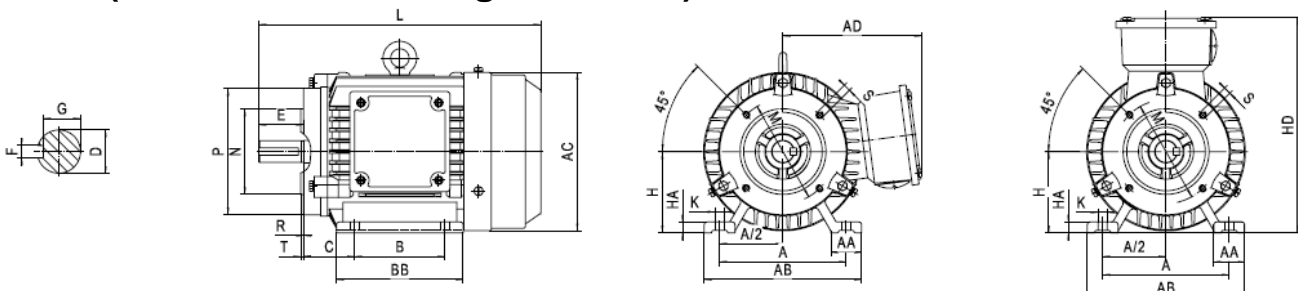
mm

B14 (Footless and Small Flange Mounted)



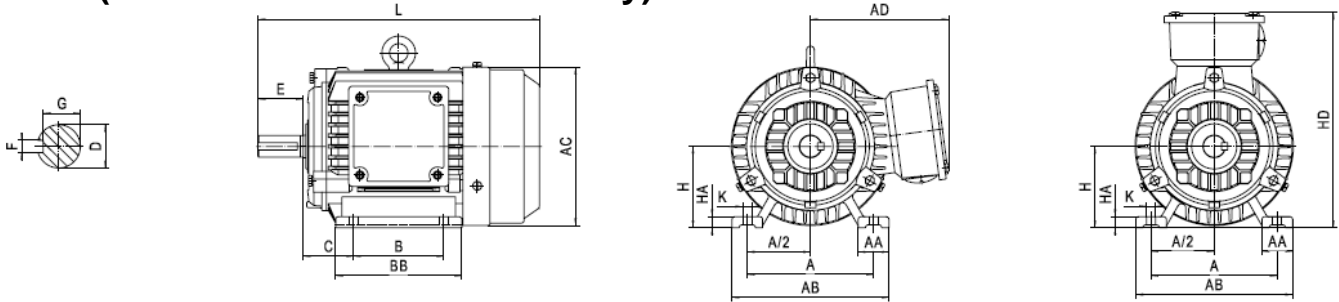
Frame	Poles	Mounting Dimension										Overall Dimension			
		D	E	F	G	M	N	P	R	S	T	AC	AD	HF	L
63M	2,4	11	23	4	8.5	75	60	90	0	4-M5	2.5	135	70	140	230
71M	2,4,6	14	30	5	11	85	70	105	0	4-M6	2.5	145	80	160	255
80M	2,4,6,8	19	40	6	15.5	100	80	120	0	4-M6	3	165	145	225	295
90S	2,4,6,8	24	50	8	20	115	95	140	0	4-M8	3	180	165	255	345
90L	2,4,6,8														385
100L	2,4,6,8	28	60	8	24	130	110	160	0	4-M8	3.5	205	175	275	390
112M	2, 6,8	28	60	8	24	130	110	160	0	4-M8	3.5	225	190	300	425
	4														455

B34 (Foot and Small Flange Mounted)



Frame	Poles	Mounting Dimension														Overall Dimension								
		A	B	C	D	E	F	G	H	K	M	N	P	R	S	T	AA	BB	HA	AB	AC	AD	HD	L
63M	2,4	100	80	40	11	23	4	8.5	63	7	75	60	90	0	4-M5	2.5	30	110	8	135	135	70	180	230
71M	2,4,6	112	90	45	14	30	5	11	71	7	85	70	105	0	4-M6	2.5	32	120	8	150	145	80	195	255
80M	2,4,6,8	125	100	50	19	40	6	15.5	80	10	100	80	120	0	4-M6	3	32	135	10	160	165	145	225	295
90S	2,4,6,8	140	100	56	24	50	8	20	90	10	115	95	140	0	4-M8	3	34	170	12	180	180	165	255	345
90L	2,4,6,8		125															210						385
100L	2,4,6,8	160	140	63	28	60	8	24	100	12	130	110	160	0	4-M8	3.5	39	186	14	200	205	175	275	390
112M	2, 6,8	190	140	70	28	60	8	24	112	12	130	110	160	0	4-M8	3.5	45	200	14	230	225	190	300	425
	4																	230						455

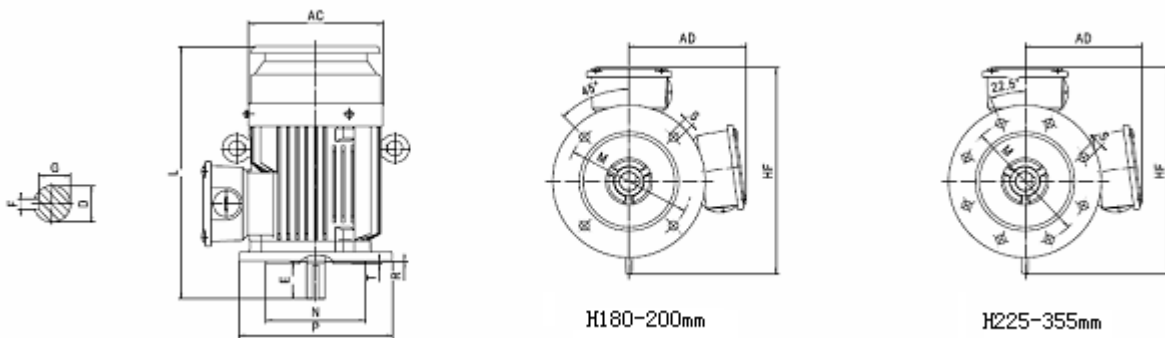
B3 (Horizontal Foot Mounted Only)



Frame	Poles	Mounting Dimension														Overall Dimension												
		A	B	C	D	E	F	G	H	K	AA	BB	HA	AB	AC	AD	HD	L										
63M	2,4	100	80	40	11	23	4	8.5	63	7	30	110	8	135	135	70	180	230										
71M	2,4,6	112	90	45	14	30	5	11	71	7	32	120	8	150	145	80	195	255										
80M	2,4,6,8	125	100	50	19	40	6	15.5	80	10	32	135	10	160	165	145	225	295										
90S	2,4,6,8	140	100	56	24	50	8	20	90	10	34	170	12	180	180	165	255	345										
90L			125									210						385										
100L	2,4,6,8	160	140	63	28	60	8	24	100	12	39	186	14	200	205	175	275	390										
112M	2, 6,8	190	140	70	28	60	8	24	112	12	130	110	160	0	4-M8	3.5	45	200	14	230	225	190	300	425				
	4																	230						455				
132S	2,4,6,8	216	140	89	38	80	10	33	132	12	55	190	18	265	270	220	350	475										
132M			178									230						510										
160M	2,4,6,8	254	210	108	42	110	12	37	160	15	65	260	20	315	320	260	420	610										
160L			254									304						655										
180M	2,4,6,8	279	241	121	48	110	14	42.5	180	15	70	311	22	355	360	265	445	680										
180L			279									349						715										
200L	2,4,6,8	318	305	133	55	110	16	49	200	19	74	379	26	395	400	305	505	770										
225S	4,8	356	286	149	60	140	18	53	225	19	78	375	28	435	450	325	550	795										
225M	2		311									55						110	16	49	400	800						
	4,6,8		60									140						18	53	825								
250M	2	406	349	168	60	140	18	53	250	24	80	445	30	490	510	380	630	890										
	4,6,8				65			58																				
280S	2	457	368	190	65	140	18	58	280	24	90	485	35	545	550	395	675	975										
280M	4,6,8																	419	65	18	58	20	67.5	536	1025			
	2																									75	20	67.5
	4,6,8																											
315S	2	508	406	216	65	140	18	58	315	28	120	570	45	635	630	540	855	1180										
	4,6,8,10				80													170	22	71	1210							
315M	2	457	457	65	140	18	58	610	1215																			

355M	2	560	75	140	20	67.5	355	28	740	680	800	0	8-Φ24	6	130	52	735	715	645	1000	690	1390
	4,6,8,10,12																					95
355L1	2	610	254	75	140	20	355	28	740	680	800	0	8-Φ24	6	130	52	735	715	645	1000	750	1500
	4,6,8,10,12																					95
3551/2	2	630	80	170	22	71	355	28	740	680	800	0	8-Φ24	6	130	52	735	715	645	1000	750	1530
	4,6,8,10,12																					110

V1 (Vertical Shaft down Footless Flange Mounted)



H180-200mm

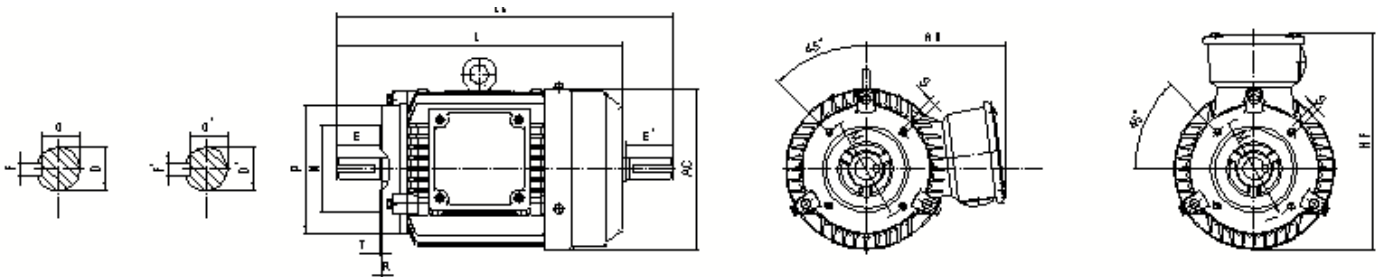
H225-355mm

Frame	Poles	Mounting Dimension										Overall Dimension			
		D	E	F	G	M	N	P	R	S	T	AC	AD	HF	L
80M	2,4,6,8	19	40	6	15.5	165	130	200	0	4-φ12	3.5	165	145	245	315
90S	2,4,6,8	24	50	8	20	165	130	200	0	4-φ12	3.5	180	165	265	370
90L															410
100L	2,4,6,8	28	60	8	24	215	180	250	0	4-φ15	4	205	175	300	420
112M	2,6,8	28	60	8	24	215	180	250	0	4-φ15	4	225	190	315	455
	4														485
132S	2,4,6,8	38	80	10	33	265	230	300	0	4-φ15	4	270	220	370	510
132M															550
160M	2,4,6,8	42	110	12	37	300	250	350	0	4-φ19	5	320	260	435	655
160L															700
180M	2,4,6,8	48	110	14	42.5	300	250	350	0	4-Φ19	5	360	265	500	725
180L															765
200L	2,4,6,8	55	110	16	49	350	300	400	0	4-Φ19	5	400	305	570	825
225S	4,8	60	140	18	53	400	350	450	0	8-Φ19	5	450	325	615	855
225M	2	55	110	16	49										860
	4,6,8	60	140	18	53										885
250M	2	60	140	18	53	500	450	550	0	8-Φ19	5	510	380	715	955
	4,6,8	58													
280S	2	65	140	18	58	500	450	550	0	8-Φ19	5	550	395	760	1045
	4,6,8	75		20	67.5										
280M	2	65	140	18	58	500	450	550	0	8-Φ19	5	550	395	760	1100
	4,6,8	75		20	67.5										

315S	2	65	140	18	58	600	550	660	0	8-Φ24	6	630	540	970	1310
	4,6,8,10	80	170	22	71										1340
315M	2	65	140	18	58	600	550	660	0	8-Φ24	6	630	540	970	1345
	4,6,8,10	80	170	22	71										1375
315L	2	65	140	18	58	600	550	660	0	8-Φ24	6	630	540	970	1420
	4,6,8,10	80	170	22	71										1450
355M	2	75	140	20	67.5	740	680	800	0	8-Φ24	6	715	645	1135	1530
	4,6,8,10 .12	95	170	25	86										1560
355L1	2	75	140	20	67.5	740	680	800	0	8-Φ24	6	715	645	1135	1640
	4,6,8,10 .12	95	170	25	86										1670
355L2/ L3	2	80	170	22	71	740	680	800	0	8-Φ24	6	715	645	1135	1670
	4,6,8,10 .12	110	210	28	100										1710

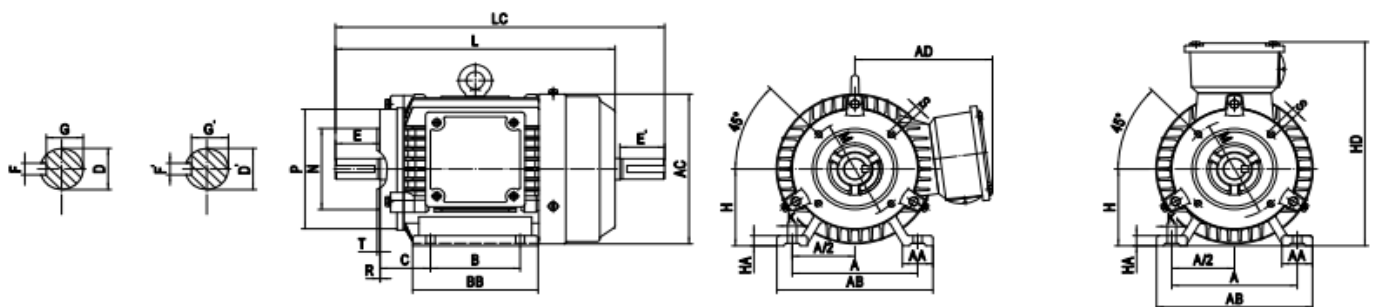
YE3 series motor with 2 shaft ends, dimensions as follows: mm

B14 (Footless and Small Flange Mounted)



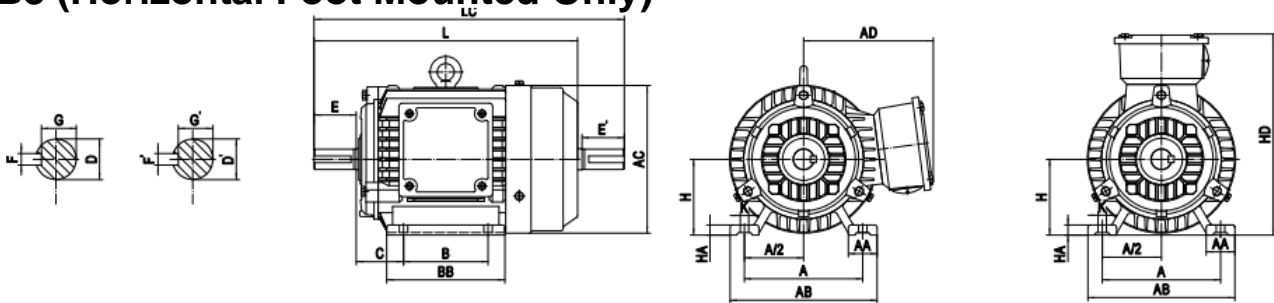
Frame	Poles	Mounting Dimension											Overall Dimension				
		D/D'	E/E'	F/F'	G/G'	M	N	P	R	S	T	AC	AD	HF	L	LC	
80M	2,4,6,8	19	40	6	15.5	100	80	120	0	4-M6	3	165	145	245	290	333	
90S	2,4,6,8	24	50	8	20	115	95	140	0	4-M8	3	180	165	265	340	393	
90L	2,4,6,8														380	433	
100L	2,4,6,8	28	60	8	24	130	110	160	0	4-M8	3.5	205	175	300	385	448	
112M	2,6,8	28	60	8	24	130	110	160	0	4-M8	3.5	225	190	315	420	483	
	4														450	513	

B34 (Foot and Small Flange Mounted)



Frame	Poles	Mounting Dimension														Overall Dimension									
		A	B	C	D/D'	E/E'	F/F'	G/G'	H	K	M	N	P	R	S	T	AA	BB	HA	AB	AC	AD	HD	L	LC
80M	2,4,6,8	125	100	50	19	40	6	15.5	80	10	100	80	120	0	4-M6	3	32	135	10	160	165	145	225	290	333
90S	2,4,6,8	140	100	56	24	50	8	20	90	10	115	95	140	0	4-M8	3	34	170	12	180	180	165	255	340	393
90L	2,4,6,8		125															210						380	433
100L	2,4,6,8	160	140	63	28	60	8	24	100	12	130	110	160	0	4-M8	3.5	39	186	14	200	205	175	275	385	448
112M	2,6,8	190	140	70	28	60	8	24	112	12	130	110	160	0	4-M8	3.5	45	200	14	230	225	190	300	420	483
	4																	230						450	513

B3 (Horizontal Foot Mounted Only)



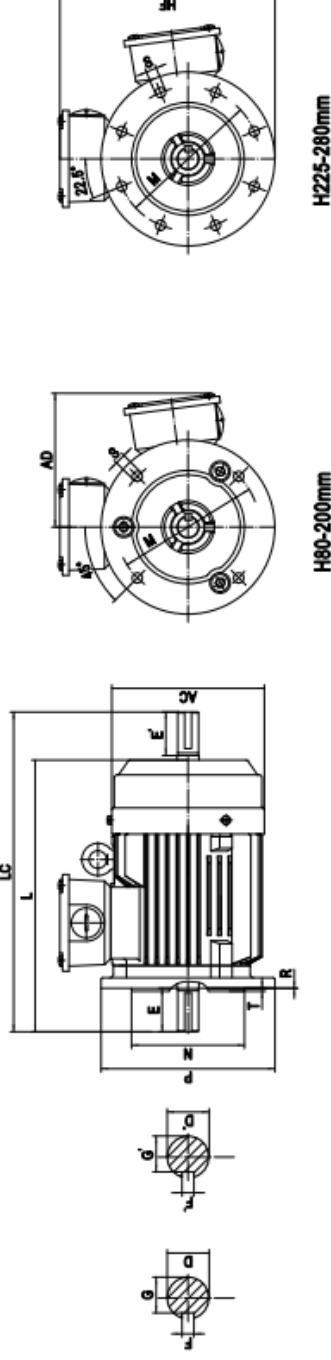
Frame	poles	Mounting Dimension													Overall Dimension									
		A	B	C	D	D'	E	E'	F	F'	G	G'	H	K	AA	BB	HA	AB	AC	AD	HD	L	LC	
80M	2.4.6.8	125	100	50	19	19	40	40	6	6	15.5	80	10	32	135	10	160	165	145	225	290	333		
90S	2.4.6.8	140	100	56	24	24	50	50	8	8	20	90	10	34	145	12	180	180	165	255	340	393		
90L	2.4.6.8		125												170						380	433		
100L	2.4.6.8	160	140	63	28	28	60	60	8	8	24	100	12	39	186	14	200	205	175	275	385	448		
112M	2.6.8	190	140	70	28	28	60	60	8	8	24	112	12	45	200	14	230	225	190	300	420	483		
	4																				450	513		
132S	2.4.6.8	216	140	89	38	38	80	80	10	10	33	132	12	55	190	18	265	270	220	350	470	551		
132M	2.4.6.8		178												230						505	589		
160M	2.4.6.8	254	210	108	42	42	110	110	12	12	37	160	15	65	260	20	315	320	260	420	605	719		
160L	2.4.6.8		254												304						650	763		
180M	2.4.6.8	279	241	121	48	48	110	110	14	14	42.5	180	15	70	311	22	355	360	265	445	675	788		
180L	2.4.6.8		279												349						715	826		
200L	2.4.6.8	318	305	133	55	55	110	110	16	16	49	200	19	74	379	26	395	400	305	505	765	879		
225S	4.8		286		60	55	140	110	18	16	53	49			375						795	909		
225M	2	356	311	149	55	55	110	110	16	16	49	225	19	78	400	28	435	450	325	550	790	904		
	4.6.8				60	55	140	110	18	16	53	49									820	934		
250M	2	406	349	168	60	55	140	110	18	16	53	250	24	80	445	30	490	510	380	630	885	998		
	4.6.8				65	55					58	49												
280S	2		368		65	55		110	18	16	58	49			485						960	1074		
	4.6.8	457		190	75	60	140	140	20	18	67.5	280	24	90		35	545	550	395	675		1104		
280M	2		419		65	55		110	18	16	58	49			536						1015	1125		
	4.6.8				75	60		140	20	18	67.5	53										1155		
315S	2		406		65	65	140	140	18	18	58	58			570						1180	1330		
	4.6.8.10				80	80	170	170	22	22	71	71									1210	1390		
315M	2	508	457	216	65	65	140	140	18	18	58	315	28	120		45	635	630	540	855	1215	1365		
	4.6.8.10				80	80	170	170	22	22	71	71									1245	1425		
315L	2		508		65	65	140	140	18	18	58	58			680						1290	1440		
	4.6.8.10				80	80	170	170	22	22	71	71									1320	1500		

Dimensions

mm

Frame	poles	Mounting Dimension													Overall Dimension								
		A	B	C	D	D'	E	E'	F	F'	G	G'	H	K	AA	BB	HA	AB	AC	AD	HD	L	LC
355M	2	610	560	254	75	75	140	140	20	20	67.5	67.5	355	28	130	690	52	735	715	645	1000	1380	1530
	4,6,8,10,12				95	80	170	170	25	22	86	71										1420	1590
355L/L1	2	610	630	254	75	75	140	140	20	20	67.5	67.5	355	28	130	750	52	735	715	645	1000	1500	1640
	4,6,8,10,12				95	80	170	170	25	25	86	71										1530	1700
355L2/L3	2	610	630	254	80	80	170	170	22	22	71	71	355	28	130	750	52	735	715	645	1000	1530	1700
	4,6,8,10,12				110	80	210	170	28	22	100	71										1570	1740

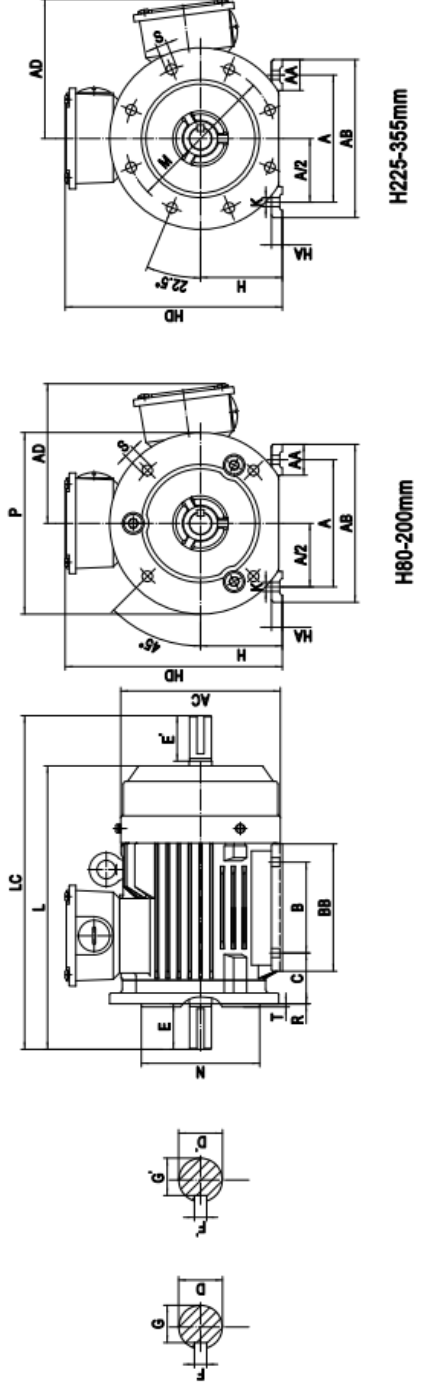
B5 (Footless and B5 Flange Mounted)



Frame	Poles	Mounting Dimension													Overall Dimension						
		D	D'	E	E'	F	F'	G	G'	M	N	P	R	S	T	AC	AD	HF	AD	HD	L
80M	2,4,6,8	19	19	40	40	6	6	15.5	15.5	165	130	200	0	4-Φ12	3.5	165	145	245	145	290	333
	90S	24	24	50	50	8	8	20	20	165	130	200	0	4-Φ12	3.5	180	165	265	165	340	393
90L	2,4,6,8	24	24	50	50	8	8	20	20	165	130	200	0	4-Φ12	3.5	180	165	265	165	380	433
	100L	28	28	60	60	8	8	24	24	215	180	250	0	4-Φ15	4	205	175	300	175	385	448
112M	2,6,8	28	28	60	60	8	8	24	24	215	180	250	0	4-Φ15	4	225	190	315	190	420	483
	4	28	28	60	60	8	8	24	24	215	180	250	0	4-Φ15	4	225	190	315	190	450	513
132S	2,4,6,8	38	38	80	80	10	10	33	33	265	230	300	0	4-Φ15	4	270	220	370	220	470	551
	132M	38	38	80	80	10	10	33	33	265	230	300	0	4-Φ15	4	270	220	370	220	505	589

160M	2,4,6,8	42	42	110	110	12	12	37	37	300	250	350	0	4-Φ19	5	320	260	435	605	719
																			650	763
180M	2,4,6,8	48	48	110	110	14	14	42.5	42.5	300	250	350	0	4-Φ19	5	360	265	440	675	788
																			715	826
200L	2,4,6,8	55	55	110	110	16	16	49	49	350	300	400	0	4-Φ19	5	400	305	505	765	879
																			795	909
225M	2	55	48	110	110	16	16	49	43	400	350	450	0	8-Φ19	5	450	325	550	790	904
																			820	934
250M	4,6,8	60	55	140	140	18	16	53	49	500	450	550	0	8-Φ19	5	510	380	655	885	998
																			960	1074
280S	2	65	55	140	140	18	16	58	49	500	450	550	0	8-Φ19	5	550	395	670	1015	1125
																			1104	1155
280M	4,6,8	75	60	140	140	20	18	67.5	53	500	450	550	0	8-Φ19	5	550	395	670	1015	1125
																			1104	1155

B35 (Foot and B5 Flange Mounted)



Frame	Poles	Mounting Dimension														Overall Dimension													
		A	B	C	D	D'	E	E'	F	F'	G	G'	H	K	M	N	P	R	S	T	AA	BB	HA	AB	AC	AD	HD	L	LC
80M	2,4,6,8	125	100	50	19	19	40	40	6	6	15.5	15.5	80	10	165	130	200	0	4-Ø12	3.5	32	135	10	160	165	145	225	290	333
90S	2,4,6,8	100	100	56	24	24	50	50	8	8	20	20	90	10	165	130	200	0	4-Ø12	3.5	34	170	12	180	180	165	255	340	393
90L		125																											
100L	2,4,6,8	160	140	63	28	28	60	60	8	8	24	24	100	12	215	180	250	0	4-Ø15	4	39	186		200	205	175	275	385	448
112M	2,6,8 4	190	140	70	28	28	60	60	8	8	24	24	112	12	215	180	250	0	4-Ø15	4	45	200	14	230	225	190	300	420	483
132M																													
132S	2,4,6,8	216	140	89	38	38	80	80	10	10	33	33	132	12	265	230	300	0	4-Ø15	4	55	190	18	265	270	220	350	470	551
132M																													
160M	2,4,6,8	254	210	108	42	42	110	110	12	12	37	37	160	15	300	250	350	0	4-Ø19	5	65	260	20	315	320	260	420	605	719
160L																													
180M	2,4,6,8	279	241	121	48	48	110	110	14	14	42.5	42.5	180	15	300	250	350	0	4-Ø19	5	70	311	22	355	360	265	445	675	788
180L																													
200L	2,4,6,8	318	305	133	55	55	110	110	16	16	49	49	200	19	350	300	400	0	4-Ø19	5	74	379	26	395	400	305	505	765	879
225S	4,8	356	286	149	60	60	140	110	18	16	53	49	225	19	400	350	450	0	8-Ø19	5	78	375	28	435	450	325	550	795	909
225M																													
250M	2	406	349	168	60	60	140	110	18	16	58	49	250	24	500	450	550	0	8-Ø19	5	80	445	30	490	510	380	630	885	998
	4, 6, 8																												
280S	2	457	368	190	65	55	140	110	18	16	58	49	280	24	500	450	550	0	8-Ø19	5	90	485	35	545	550	395	675	960	1074
	4, 6, 8																												
280M	2	419	419	65	55	140	110	18	16	58	49	280	24	500	450	550	0	8-Ø19	5	90	536	35	545	550	395	675	1015	1125	
	4, 6, 8																												53

315S	2	508	406	216	65	65	140	140	140	18	18	58	58	58	315	28	600	550	660	0	8- Φ 24	6	120	570	45	635	630	540	855	1180	1330
	4,6,8,10				80	80	170	170	22	22	71	71	71	610										1210						1390	
315M	2	508	457	216	65	65	140	140	140	18	18	58	58	58	315	28	600	550	660	0	8- Φ 24	6	120	610	45	635	630	540	855	1215	1365
	4,6,8,10				80	80	170	170	22	22	71	71	71	1245																1425	
315L	2	508	508	216	65	65	140	140	140	18	18	58	58	58	315	28	600	550	660	0	8- Φ 24	6	120	680	45	635	630	540	855	1290	1440
	4,6,8,10				80	80	170	170	22	22	71	71	71	1320																1500	
355M	2	610	560	254	75	75	140	140	140	20	20	67.5	67.5	67.5	355	28	740	680	800	0	8- Φ 24	6	130	690	52	735	715	645	100	1390	1530
	4,6,8,10.				95	80	170	170	25	25	86	71	750	1420																1590	
355L/L 1	2	610	630	254	75	75	140	140	140	20	20	67.5	67.5	67.5	355	28	740	680	800	0	8- Φ 24	6	130	750	52	735	715	645	100	1500	1640
	4,6,8,10.				95	80	170	170	25	25	86	71	1530	1700																	
355L2/ L3	2	610	630	254	80	80	170	170	170	22	22	71	71	71	355	28	740	680	800	0	8- Φ 24	6	130	750	52	735	715	645	100	1530	1700
	4,6,8,10.				110	80	210	170	28	28	100	71	1570	1740																	

Conventional mounting type and suitable frame size are given in following table (with “√”)

Frame	basic type			derived type											
	B3	B5	B35	V1	V3	V5	V6	B6	B7	B8	V15	V36	B14	B34	V18
63~112	√	√	√	√	√	√	√	√	√	√	√	√	√	√	√
132~160	√	√	√	√	√	√	√	√	√	√	√	√	-	-	-
180~280	√	√	√	√	-	-	-	-	-	-	-	-	-	-	-
315~355	√	-	√	√	-	-	-	-	-	-	-	-	-	-	-

If there is no other request in the order or agreement, terminal box standard position is at the right side of the frame ; data above may be changed without prior notice.